

- A DEM. WIDTH OF LIGHT CURTAIN _____
- B DEM. BOTTOM OF RAM TO TOP OF LIGHT CURTAIN _____
- C DEM. FRONT OF BOLSTER TO LIGHT CURTAIN _____
- D DEM. BOTTOM OF LIGHT TO FLOOR _____
- E DEM. TOP OF BOLSTER TO FLOOR _____
- F DEM. PRESS SHUT HEIGHT _____

CAUTION !

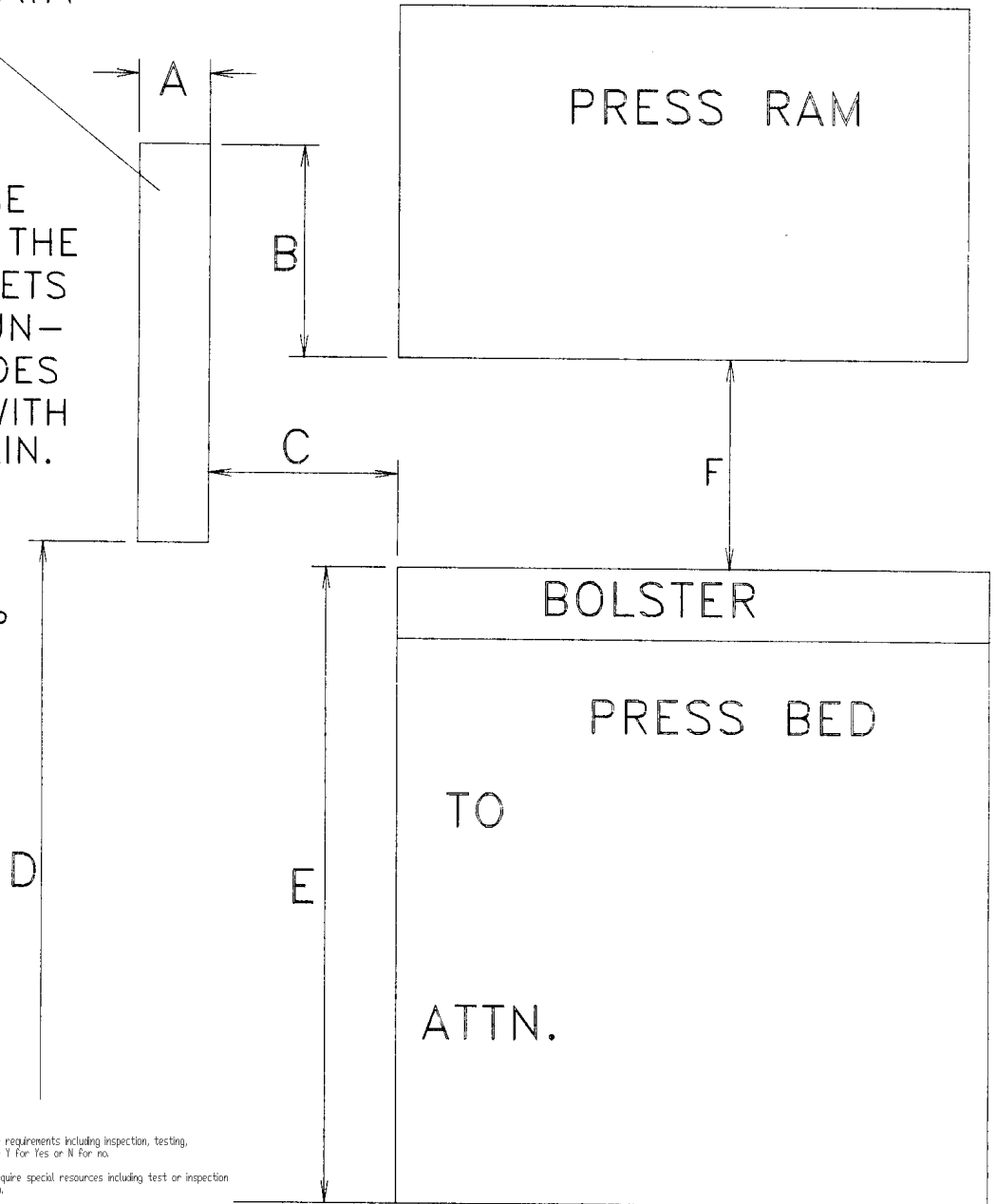
CHECK "B" DEM. WITH THE RAM DOWN ON BOTTOM AND THE RAM ADJUSTMENT DOWN.

LIGHT CURTAIN

BMC NEEDS THESE DEM. TO DESIGN THE MOUNTING BRACKETS TO MOUNT THE UN-LOADER SO IT DOES NOT INTERFERE WITH THE LIGHT CURTAIN.

BACHHUBER MFG. CORP
150 STEEL LANE
MAYVILLE WI 53050

920-387-5537
920-387-2965 fx



FOR BMC USE ONLY: 7.1 Control of Product Realization

- Y N Does the product defined herein contain special quality objectives or requirements including inspection, testing, packaging, installation, or product delivery requirements? Circle Y For Yes or N For no.
- Y N Does the product defined herein contain special process steps or require special resources including test or inspection equipment, gages, or processes? Circle Y For Yes or N For no.

If the answer to any of these questions is yes, product realization planning is required and the individual that answered "yes" (usually the sales manager) is responsible for calling a planning meeting as defined in ISO procedure 7.1. Realization planning notes are to be made on, or attached to this form and retained in the customer quote file as a quality record.

FLOOR LINE

Fm 0731-LCB

01 4-16-96 PSB

Rev 0 effective 1/4/2 CJ